

MADE AND TAKEN

JOINERS

DAVID HOCKNEY

- ▶ Between the years of 1982 and 1987, David Hockney experimented heavily with photocollage, creating works he calls joiners.
- ▶ A joiner consists of a series of photographs taken from different viewpoints, arranged (overlapping) to form a single piece. By taking the pictures from carefully selected viewpoints, and arranging them in the right way, Hockney is able to change the apparent shape of space and introduce the element of time into the work.
- ▶ In his very earliest works, he used a Polaroid camera.

DAVID HOCKNEY

- ▶ As the complexity of the joiners increased, he moved to using a Pentax 110, this allowed him to hugely increase the complexity of the pieces.
- ▶ His longest Polaroid joiner took 5 hours to complete, his longest Pentax joiner took 8 days of photography alone.

DAVID HOCKNEY

- ▶ Hockney's works have strong links with Cubism, in that his motivation for producing them was to introduce three artistic elements which a single photograph cannot have:
 - ▶ Layered time, space and narrative
- ▶ Hockney points out that a single photo expresses a single instant, and so cannot represent time or narrative

NARRATIVE, LAYERED TIME, & SPACE

- ▶ In *Fredda Bringing Ann and Me a Cup of Tea* (1983), the photocollage shows Fredda at all stages of her journey from the house, down the steps to the garden, a simple narrative.
- ▶ A good example of layered time is in *Steve Cohen, Ian, Gary, Lindsay, Doug, Anthony, Ken* (1982), which depicts a group of friends chatting. Since all the friends are continually moving and talking, and there is a space of time between each photo, the whole conversation is present in the joiner, but it is presented at once rather than sequentially (as in a film).

NARRATIVE, LAYERED TIME, & SPACE

- ▶ There is the spatial aspect to Hockney's joiners. He explores this theme in *Pearblossom Highway* (1986), in which the left side of the picture consists of scenic elements, and the right side consists of road elements, corresponding to the fact that the passenger seat is on the left and the passenger enjoys the view, and the driving seat is on the right and the driver looks at signs, etc.

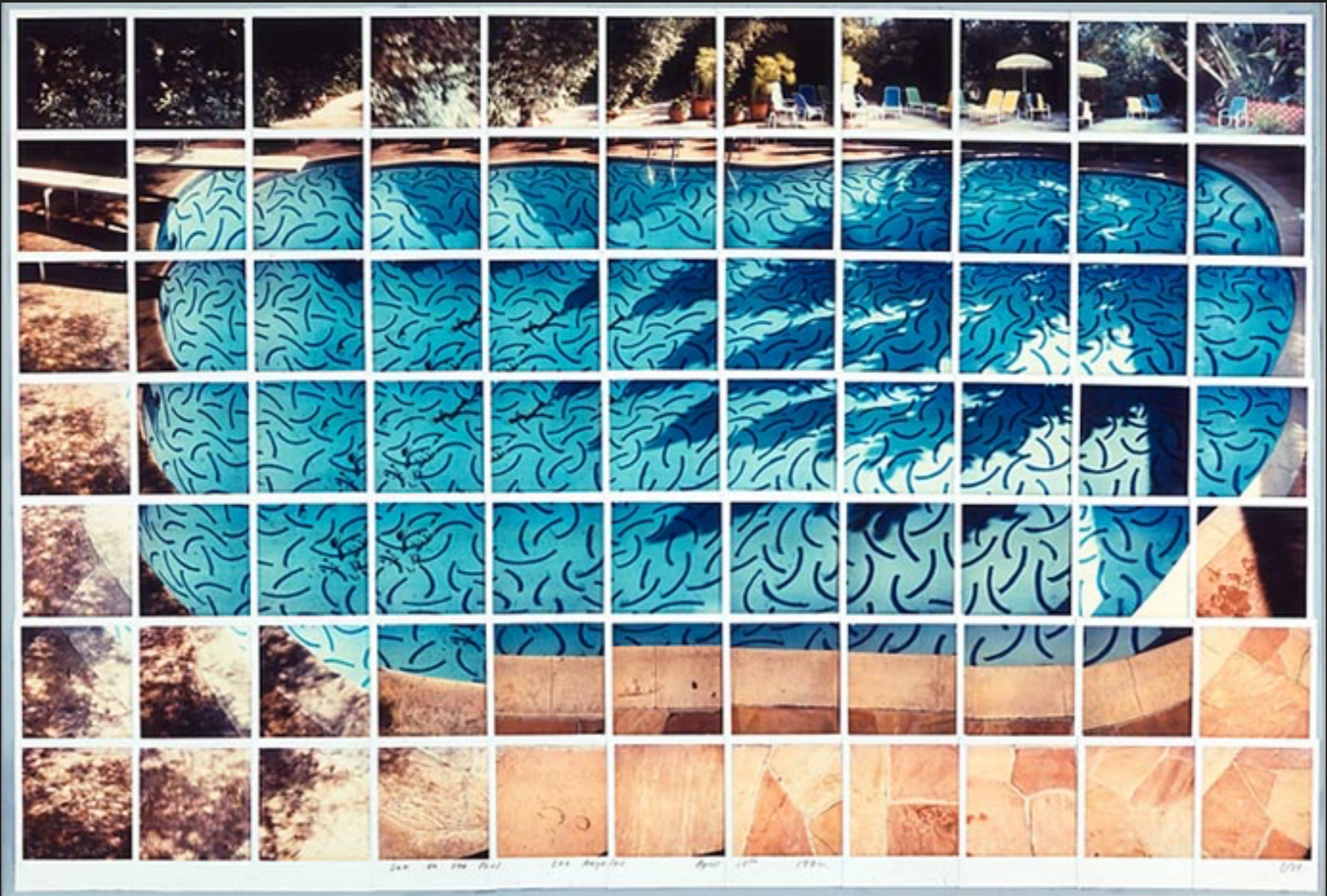


David Hockney



Henry Moore. Much (Hull) 23rd July 1992. 106

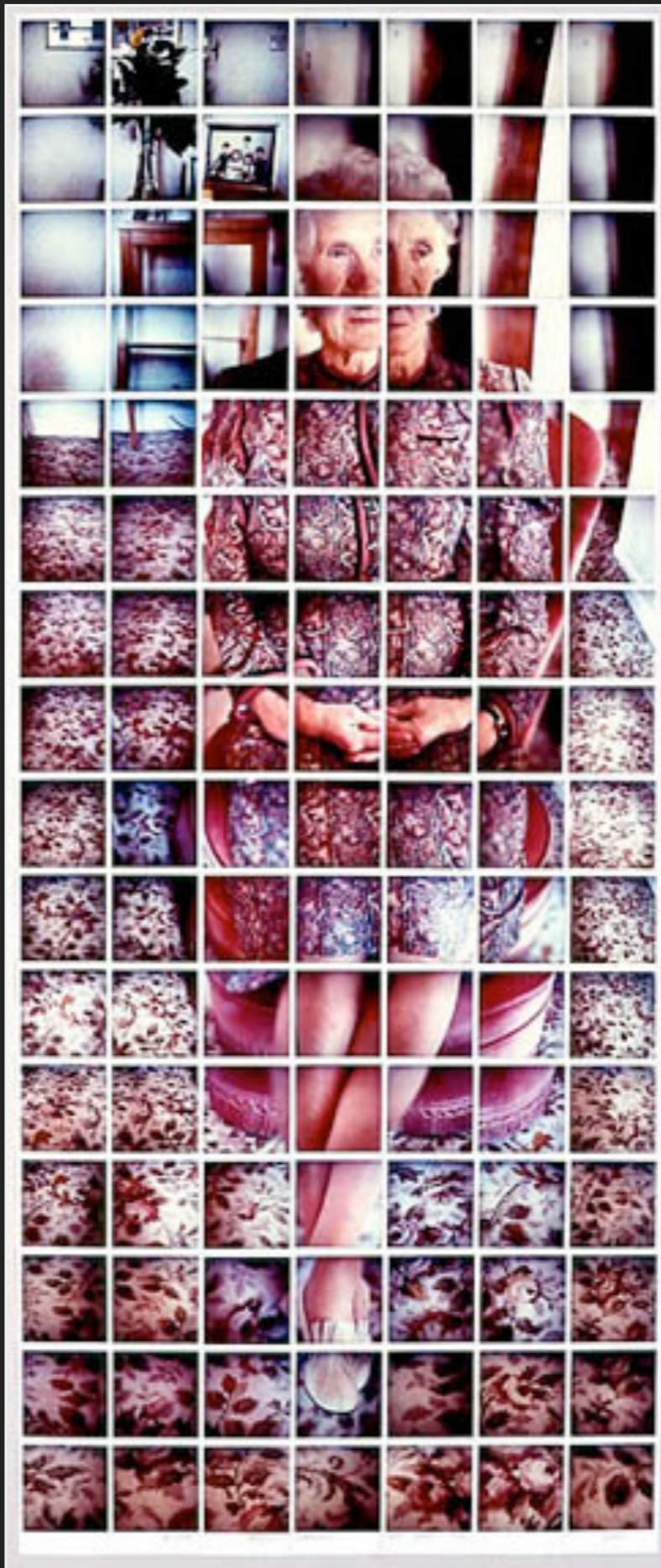
David Hockney



David Hockney



David Hockney



David Hockney



David Hockney



David Hockney



David Hockney



David Hockney



David Hockney



David Hockney

JOINERS



Credits: maggiemacphoto @ flickr.com



Credits: maggiemacphoto @ flickr.com



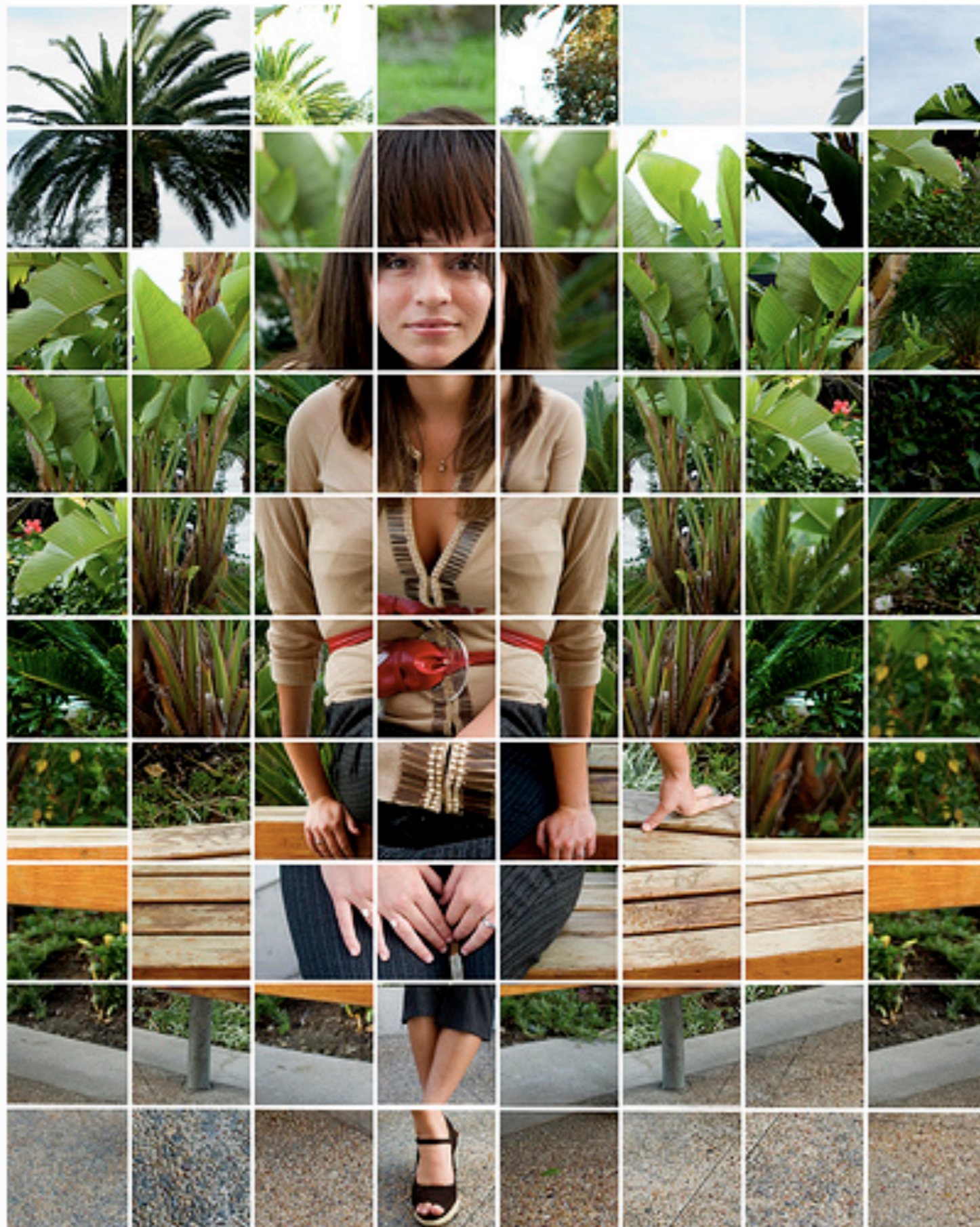
Credits: goldsmithexile @ flickr.com



Brno Del Zou



Brno Del Zou



Credits: arialMARTE @ flickr.com



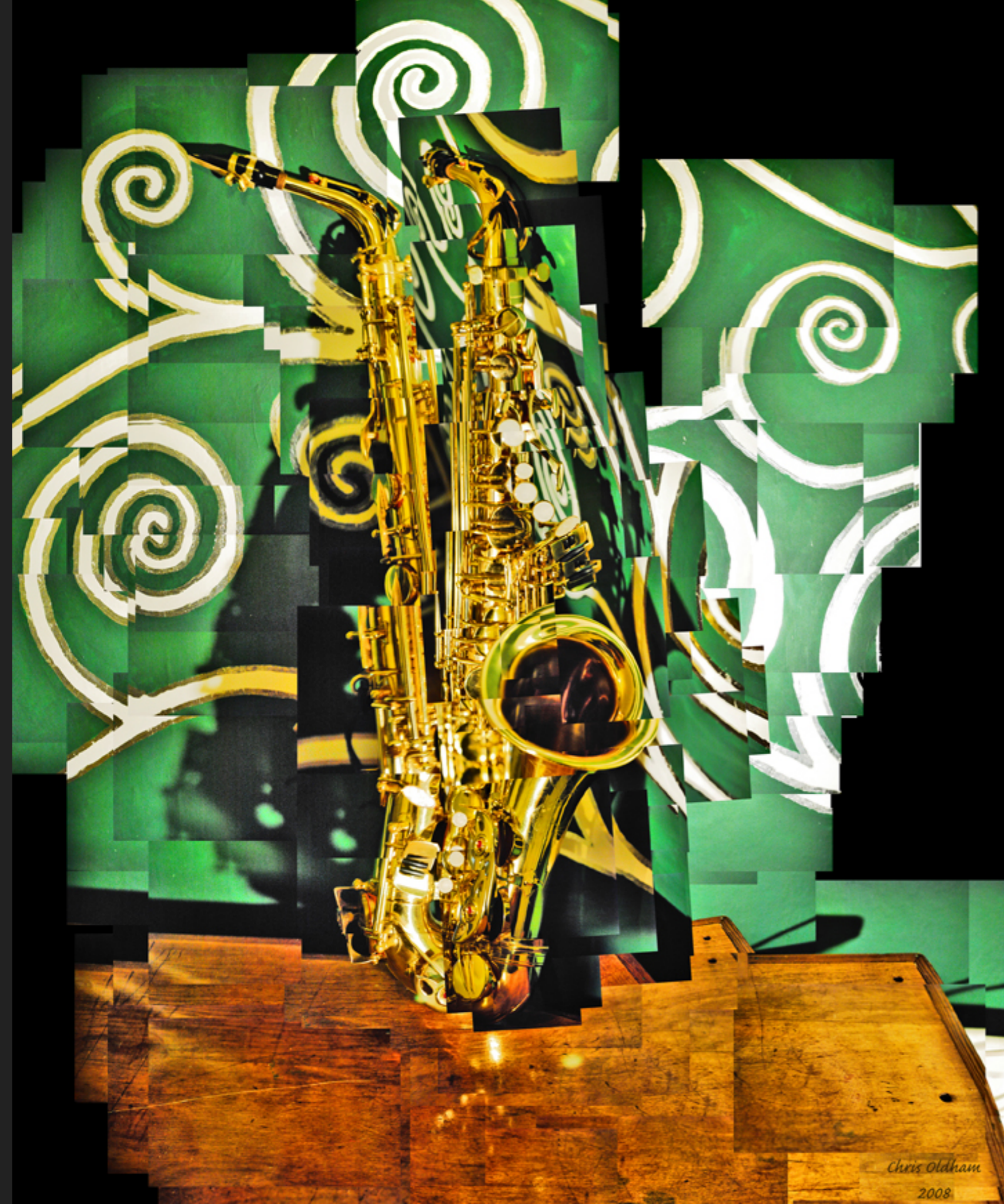
Credits: Daren Higham (paintMonkey) @ flickr.com



Credits: Daren Higham (paintMonkey) @ flickr.com



Credits: thescatteredimage @ flickr.com

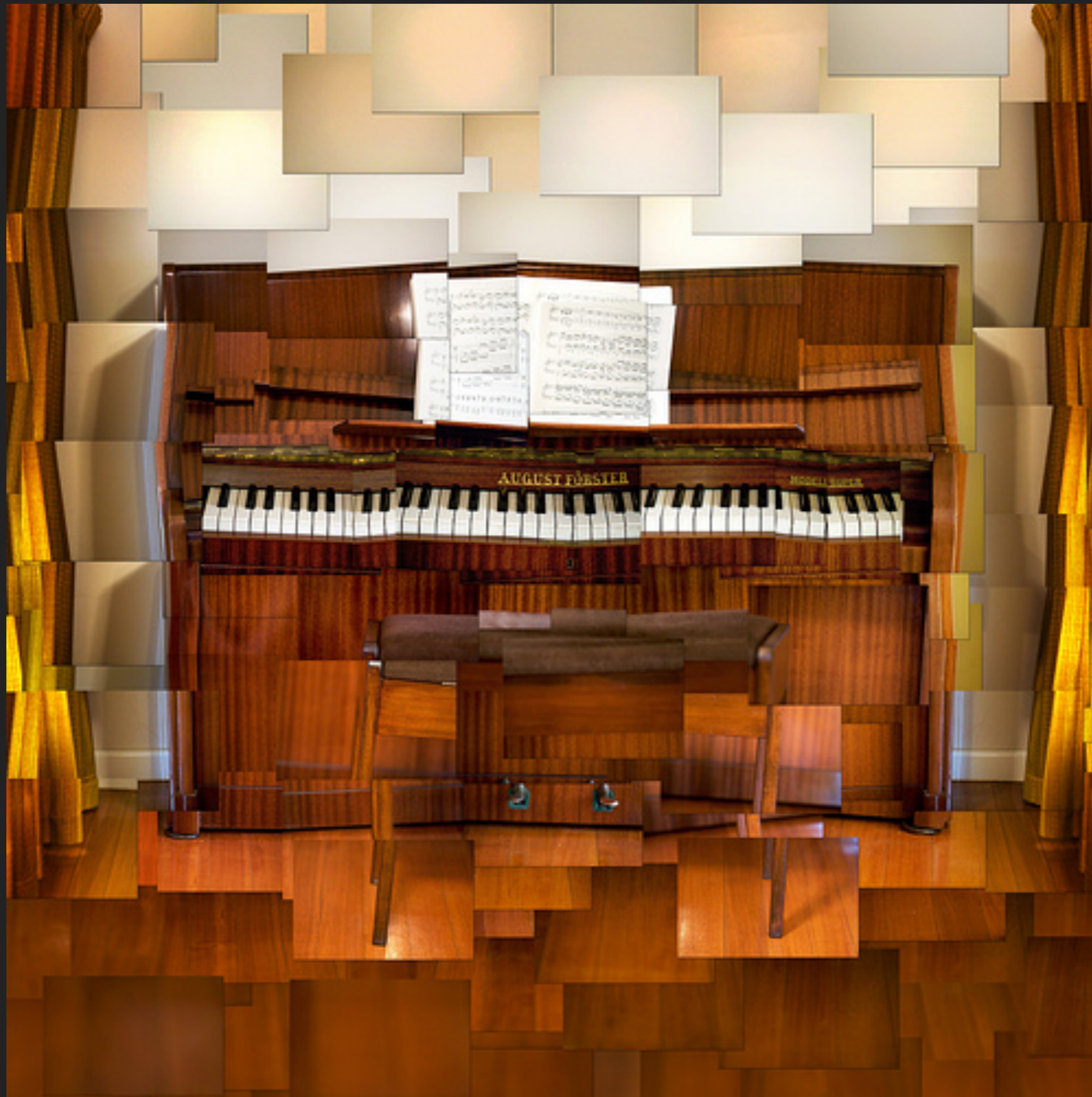


Chris Oldham
2008

Credits: ecoartist chris @ flickr.com



Credits: raul valda e @ flickr.com



Credits: thescatteredimage @ flickr.com



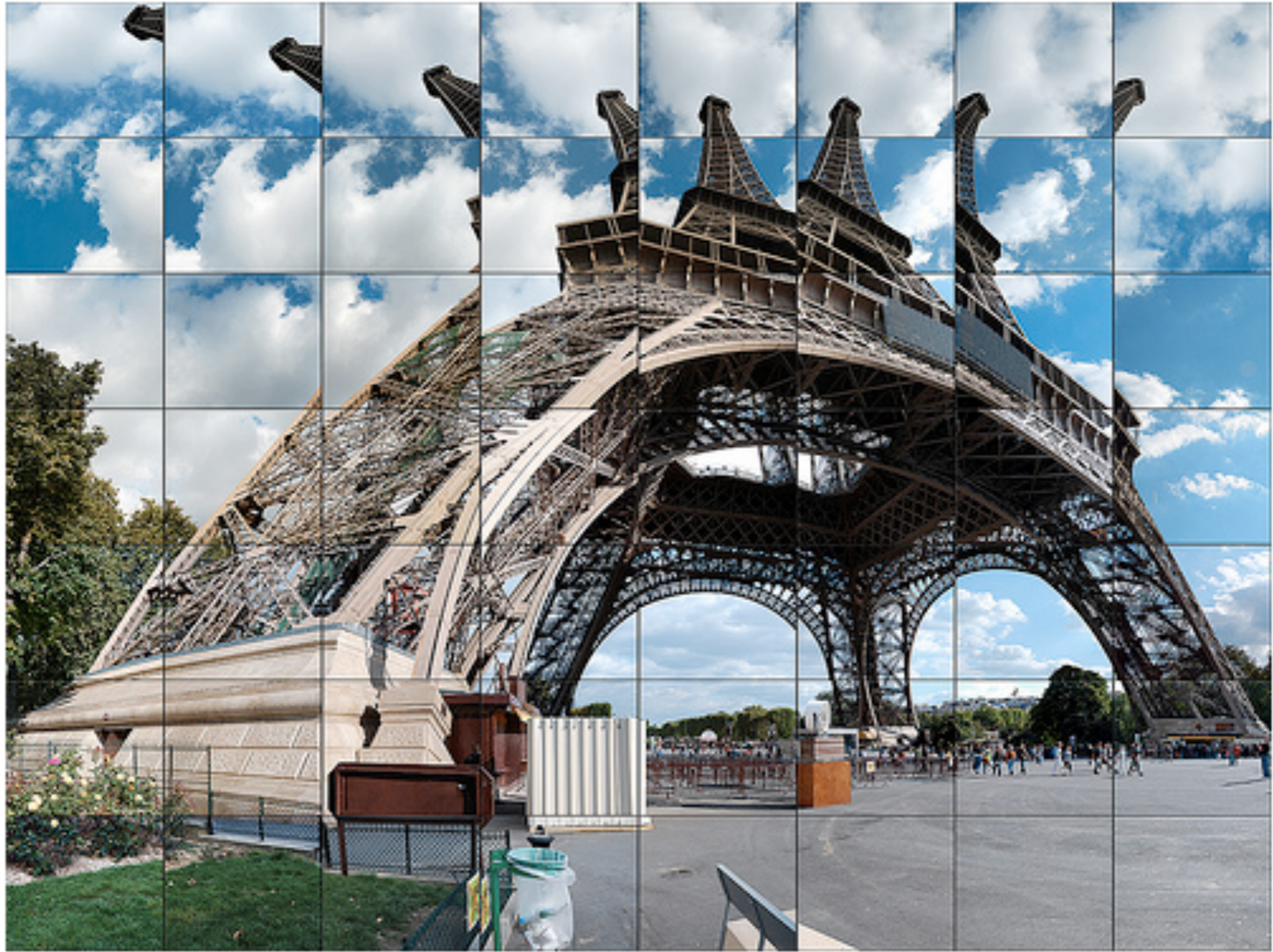
Credits: Lee Sie @ flickr.com



Credits: Tucker Matthews @ flickr.com



Credits: Steffe @ flickr.com



Credits: edlimphoto @ flickr.com



Credits: [thescatteredimage @ flickr.com](https://www.flickr.com/photos/thescatteredimage/)



Credits: the3robbers @ flickr.com



Chris Soria



Chris Soria

REFERENCE

- ▶ Flickr Group: Joiners
- ▶ Flickr Group: Hockneyesque
- ▶ www.hockneypictures.com